

Robb Report

robbreport.com.my

MAY 2018

MALAYSIA

**ENTER THE
DRAGON**
MACAU'S MICHELIN-
STARRED JADE DRAGON

**FROM RUSSIA
WITH LOVE**
ST PETERSBURG
TO MOSCOW



**BEYOND
THE SEA**
THE BEST OF EVERYTHING
ON THE WATER

PLUS
ROJA DOVE
AMANKORA
RATHBONE SQUARE
LAMBORGHINI URUS

A large, open-plan living space occupies the penthouse's top level.

HIP TO BE SQUARE

Beautifully styled interiors by Echlin and an address in one of London's most vibrant neighbourhoods make Rathbone Square's four-bedroom penthouse nothing short of irresistible.

By RENYILIM

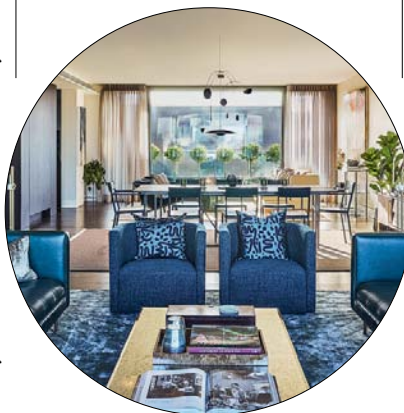




When it comes to creature comforts at Penthouse 705 in Rathbone Square, you won't be left wanting in this four-bedroom home, which rules the roost across the top two floors of this magnificent Fitzrovia property (£7.75 million, RM42 million). Across 268.7sqm of living space, you'll find generously proportioned bedrooms with en-suite bathrooms, walk-in wardrobes, generous storage areas, southerly and northern-facing terraces, and a sizeable balcony.

But that's just the tip of the ultra-luxe iceberg in this

Echlin opted for a palette of rich materials and serene colours that offer a modern, cosmopolitan feel of refined luxury.



penthouse. It comes filled with carefully considered lifestyle touches, including custom-designed kitchens with state-of-the-art Gaggenau appliances and a Calacatta marble worktop, ambient integrated lighting, comfort cooling, and underfloor heating.

There are even cosmetic fridges approved by renowned make-up artist Charlotte Cowen, who explains: "Many make-up products and beauty essentials benefit from being kept cool to ensure they work beautifully on the skin."

Penthouse 705's interiors also have the advantage of being exclusively created by visionary

Scents from London chandlers Rachel Vosper and True Grace add another dimension to the property.

design studio Echlin, which prides itself on its commitment to British luxury craftsmanship and thoughtful, innovative design.

A serene colour palette of blues, greens, nudes and chalky whites is executed in tasteful linens, velvets and leathers, presenting a calm contrast to one of the capital's most connected neighbourhoods.

While classic and vintage pieces from Julian Chichester, Ochre and The New Craftsmen (plus a

striking hanging mobile by Corrie Williamson) adorn the penthouse, scents from London chandlers Rachel Vosper and True Grace add another dimension to the property.

A former Royal Mail sorting office, Rathbone Square has transformed into a landmark mixed-use address in Great Portland Estate's largest development scheme to date.

Outside the penthouse, residents may enjoy an 18m



Carefully selected pieces by UK-based designers and makers dot the interior.

skylit swimming pool, a 16-seat screening room, a wine cellar and tasting room, a private residents' garden, and a 24-hour concierge.

www.rathbonesquare.com

